

Installing the Reference Implementation for Windows Mobile

Reference Implementation package

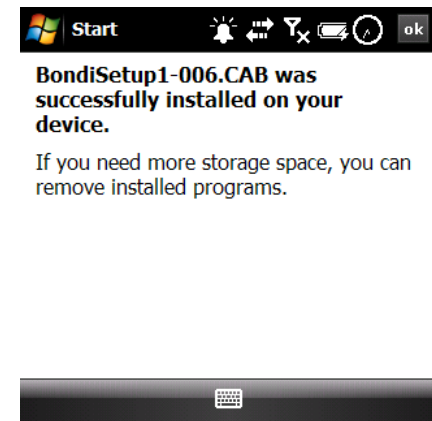
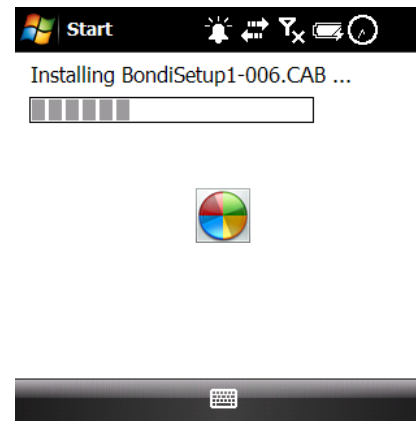
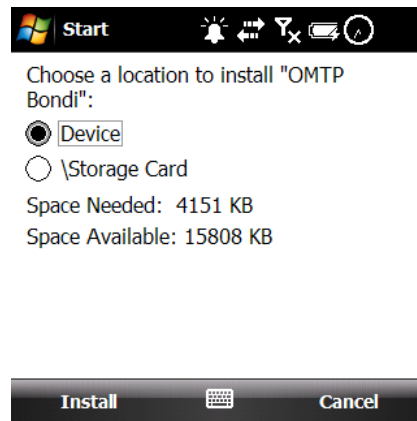
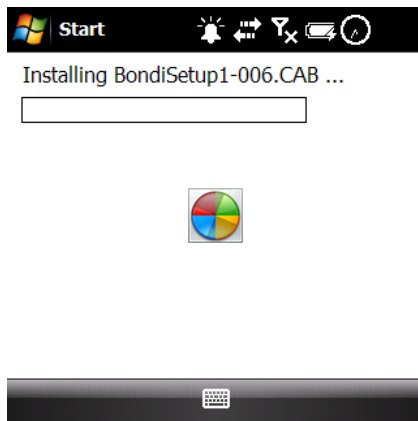


- The RI comes as an SDK package containing the following parts:
 - Desktop distribution
 - A version for Windows desktop machines
 - Documentation
 - Full documentation for BONDI including interface definitions
 - Phone Distribution
 - The RI package for WM 6.1
- Release notes are provided

Installing the BONDI RI

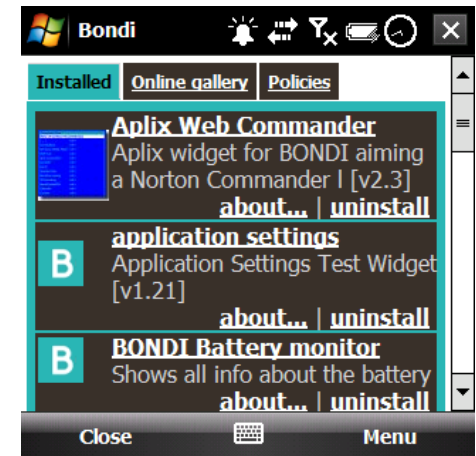
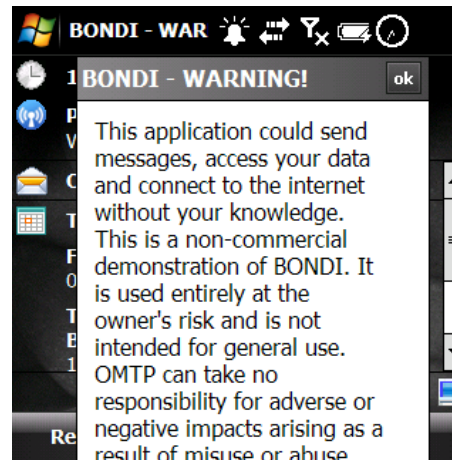
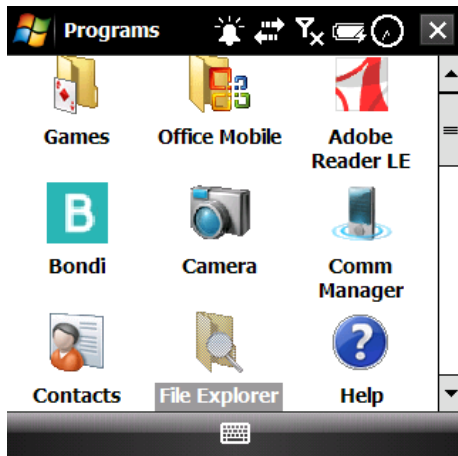


- Copy the BONDlsetupxxx.cab to your Windows Mobile 6.x device
- Use file explorer to install this file on your device



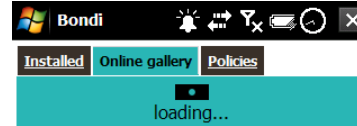
Running the BONDI RI

- Click the BONDI icon
- On first execution, you will need to read and click through a warning
- Some widgets are pre-installed in the RI build



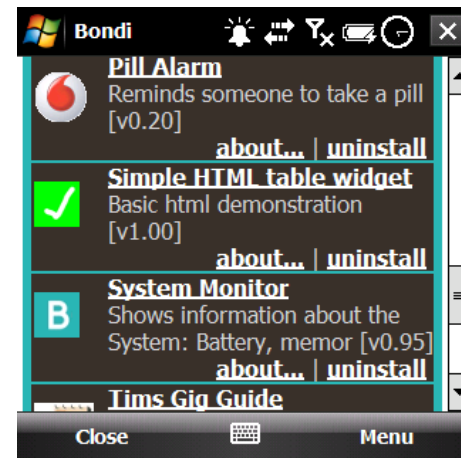
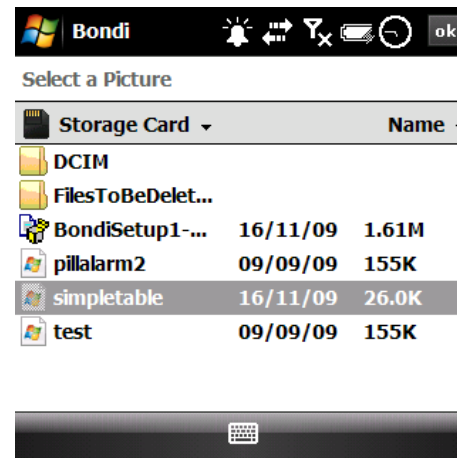
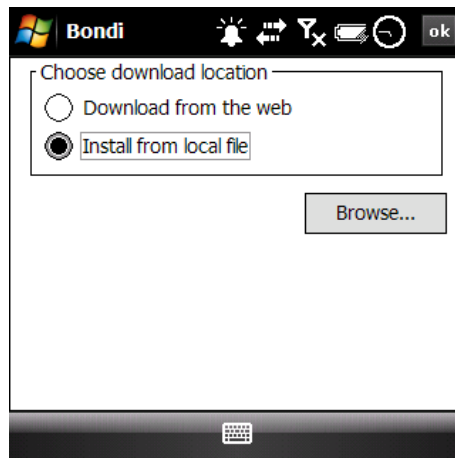
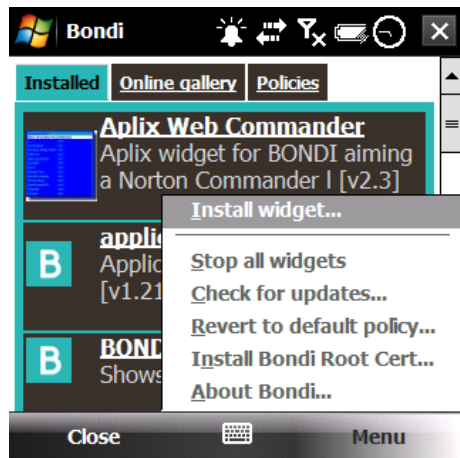
Installing new widgets

- You can install widgets in several ways onto your device
 - From the online gallery
- From locally stored widgets
- From widgets stored at any URL



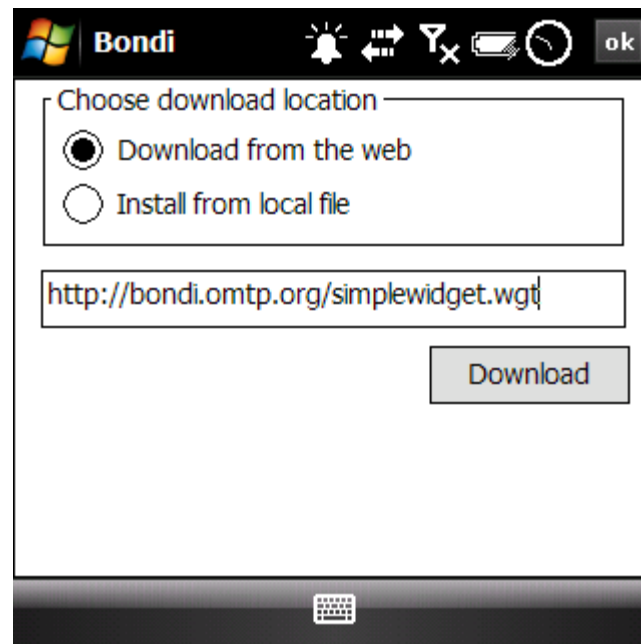
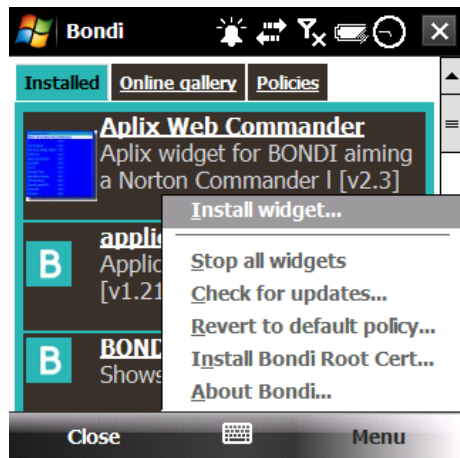
Installing a local widget

- Assuming that you can load a widget file (with .wgt extension) onto your Windows Mobile device, you can install it using the menu



Installing a widget from the web

- If the widget is stored at a particular url, it may be installed onto the device (provided there is an active data connection)



Installing from the online gallery

